

Announcing the Stifel Access Next Gen Experience

The Stifel Access Next Gen Experience is a major upgrade to Stifel Access that includes two brand new pages, new features, and functionality.

PORTFOLIO AT A GLANCE

Portfolio at a Glance allows the user to view a quick snapshot of one account or a group of accounts.

Detailed information on *Portfolio at a Glance* includes:

DAY MOVERS

Showing the top 10 dollar movers in the selected portfolio for the day.

PORTFOLIO VALUE

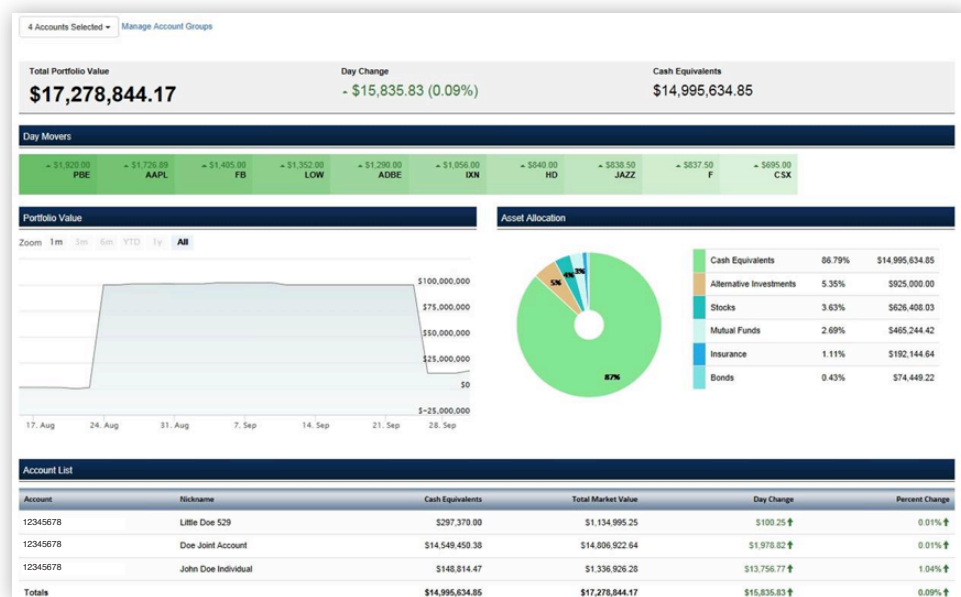
A graph showing the value of the selected account(s) over time.

ASSET ALLOCATION

Showing the breakdown of and makeup of asset types.

ACCOUNT LIST

A Quick view of the selected account(s), showing their cash and market values with daily change and percent change.

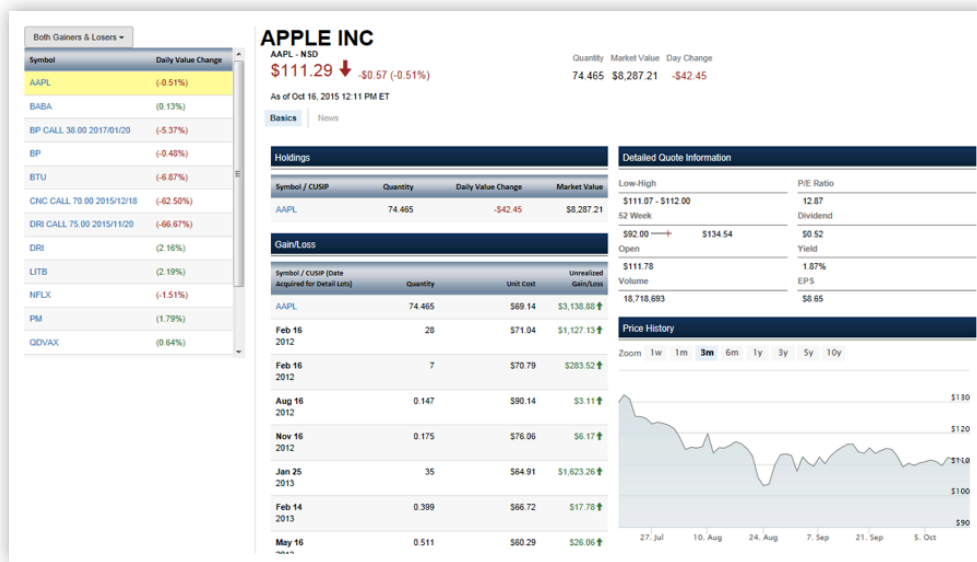


HOLDINGS ZOOM

Holdings Zoom allows the user to quickly zoom into additional information on the selected Stock, Option, or Mutual Fund.

Detailed information on *Holdings Zoom* includes:

- Quote, quantity, and value information
- Unrealized gain/loss information
- Quote detail: Intraday High/Low, 52-Week Range, Open Price, Volume, P/E Ratio, Dividend, Yield, EPS
- Price history (chart)
- Order status
- News



In addition to adding brand new pages like Portfolio at a Glance and Holdings Zoom, a number of other new features will be made available to enhance the user experience. These enhancements include but are not limited to:

- Larger and cleaner fonts to increase readability
- Account grouping
- New data elements added to existing pages
- The ability to create, edit, and save customized screen views

Stifel has rebuilt the infrastructure of the web site, and we have many more enhancements to the user experience planned for 2016 and beyond!